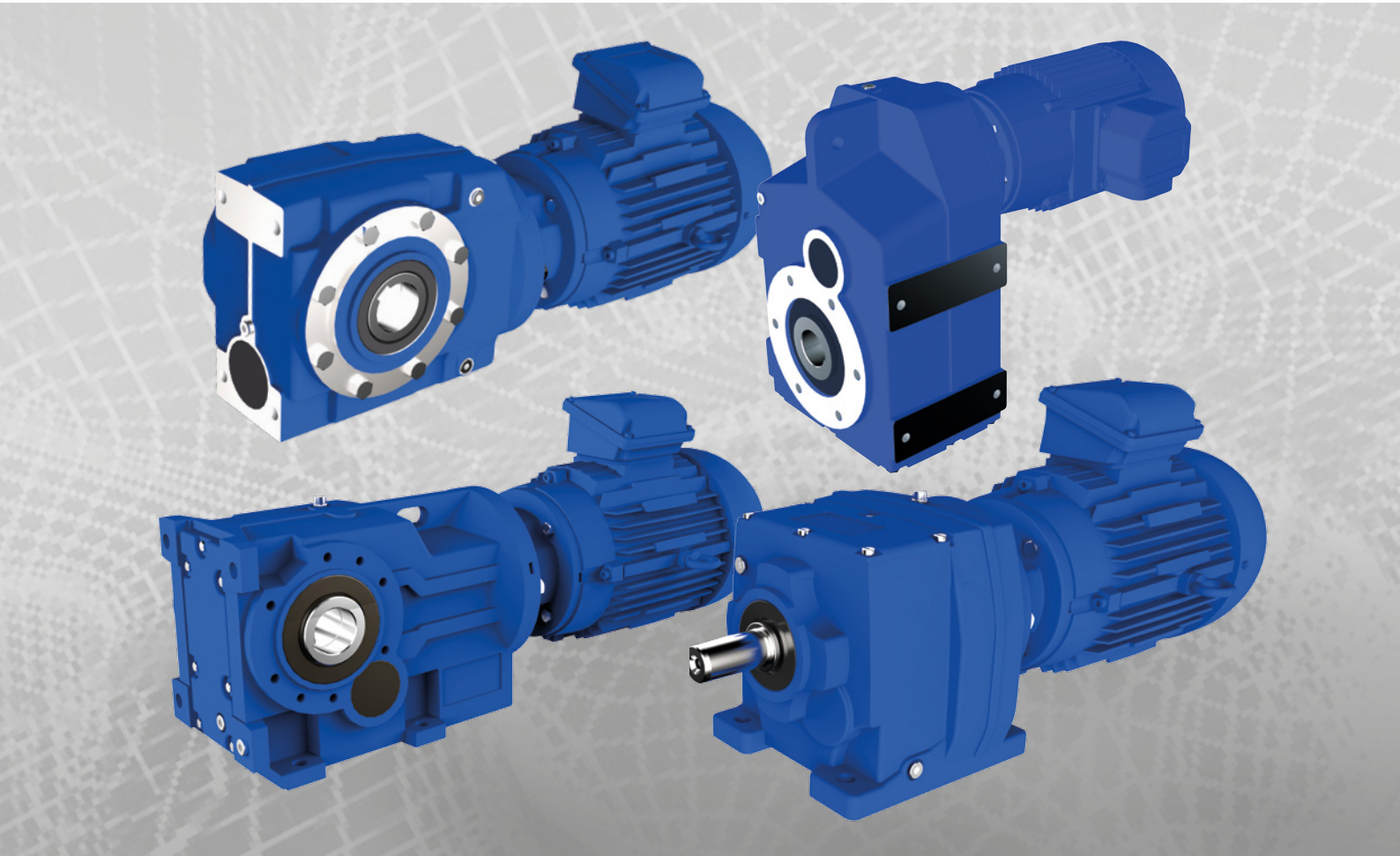


Introducing the New Renold Geared Motor Range



RENOLD

Quality Gearing Solutions Partner

Geared Motor Units

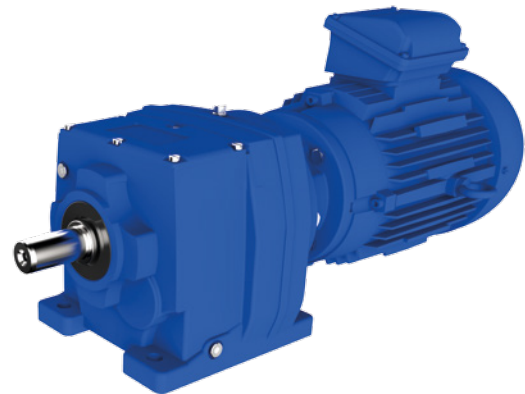
“Renold – a respected, trusted global brand.”



→ R Series

Inline Helical Gear Unit

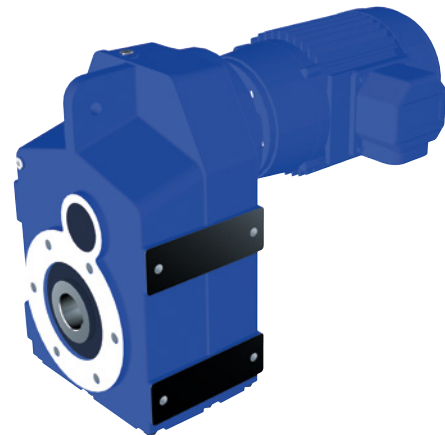
- Reduction Gear and Geared Motor options
- Power Up to 160 kW covering the majority of drive requirements
- Ratios: Up to 58:1 in two stage, up to 16,200:1 in combined form offers wide speed range
- Output Torque up to 20,000 Nm providing low cost per Nm
- Interchangeable Euro dimensions for ease of replacement
- Accepts Standard IEC/NEMA Motors ensuring fast and low cost replacement
- Oil-tight gear head keeps motor replacement free from oil spills
- Cast iron case with epoxy-polyester powder-coated finish for strength and durability



→ F Series

Shaft Mounted Gear Unit

- Reduction gear and geared motor options
- Power up to 110 kW covering the majority of drive requirements
- Ratios: up to 5:1 to 100:1 in double reduction and up to 5,600:1 in combined form offers wide speed range
- Output torque up to 16,500 Nm providing low cost per Nm
- Interchangeable Euro dimensions for ease of replacement
- Accepts standard IEC motors ensuring fast and low cost replacement
- Oil tight gear head keeps motor replacement free from oil spills
- Cast iron case with epoxy-polyester powder-coated finish for strength and durability



Geared Motor Units

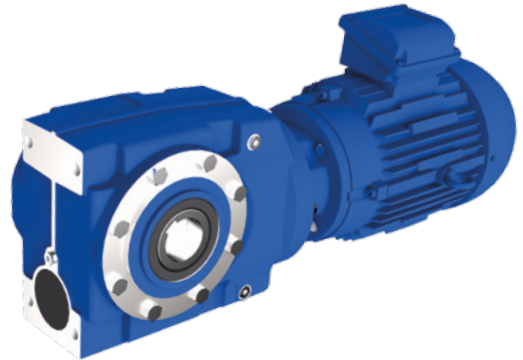
“ Interchangeable,
Euro dimensions
for ease of
replacement.



→ S Series

Helical Worm Gear Unit

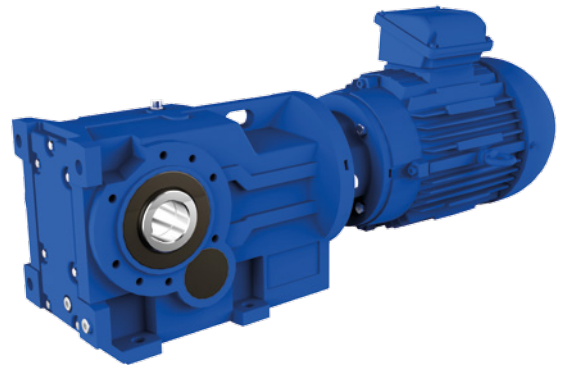
- Reduction Gear and Geared Motor options
- Power Up to 45 kW covering the majority of drive requirements
- Ratios: Up to 250:1 in two stage, up to 60,000:1 in combined form offers wide speed range
- Output Torque: Up to 10,000 Nm providing low cost per Nm
- Interchangeable Euro dimensions for ease of replacement
- Accepts Standard IEC Motors ensuring fast and low cost replacement
- Oil-tight gear head keeps motor replacement free from oil spills
- Cast iron case with epoxy-polyester powder-coated finish for strength and durability



→ K Series

Bevel Helical Gear Unit

- Reduction Gear and Geared Motor options
- Power Up to 160 kW covering the majority of drive requirements
- Ratios: Up to 160:1 in three stage, up to 35,000:1 in combined form offers wide speed range
- Output Torque: Up to 33,000 Nm providing low cost per Nm
- Interchangeable Euro dimensions for ease of replacement
- Accepts Standard IEC Motors ensuring fast and low cost replacement
- Oil-tight gear head keeps motor replacement free from oil spills
- Cast iron case with epoxy-polyester powder-coated finish for strength and durability



RENOLD

Quality Gearing Solutions Partner

RENOLD

A global power transmission group serving global markets through an international network.

For your local Renold sales and service location visit www.renold.com

Superior Technology. Global Expertise.

www.renold.com

gears.sales@renold.com



REN83/BROXSER/03.18/E
A Business of Renold Power Transmission Ltd.

RENOLD
Quality Gearing Solutions Partner